

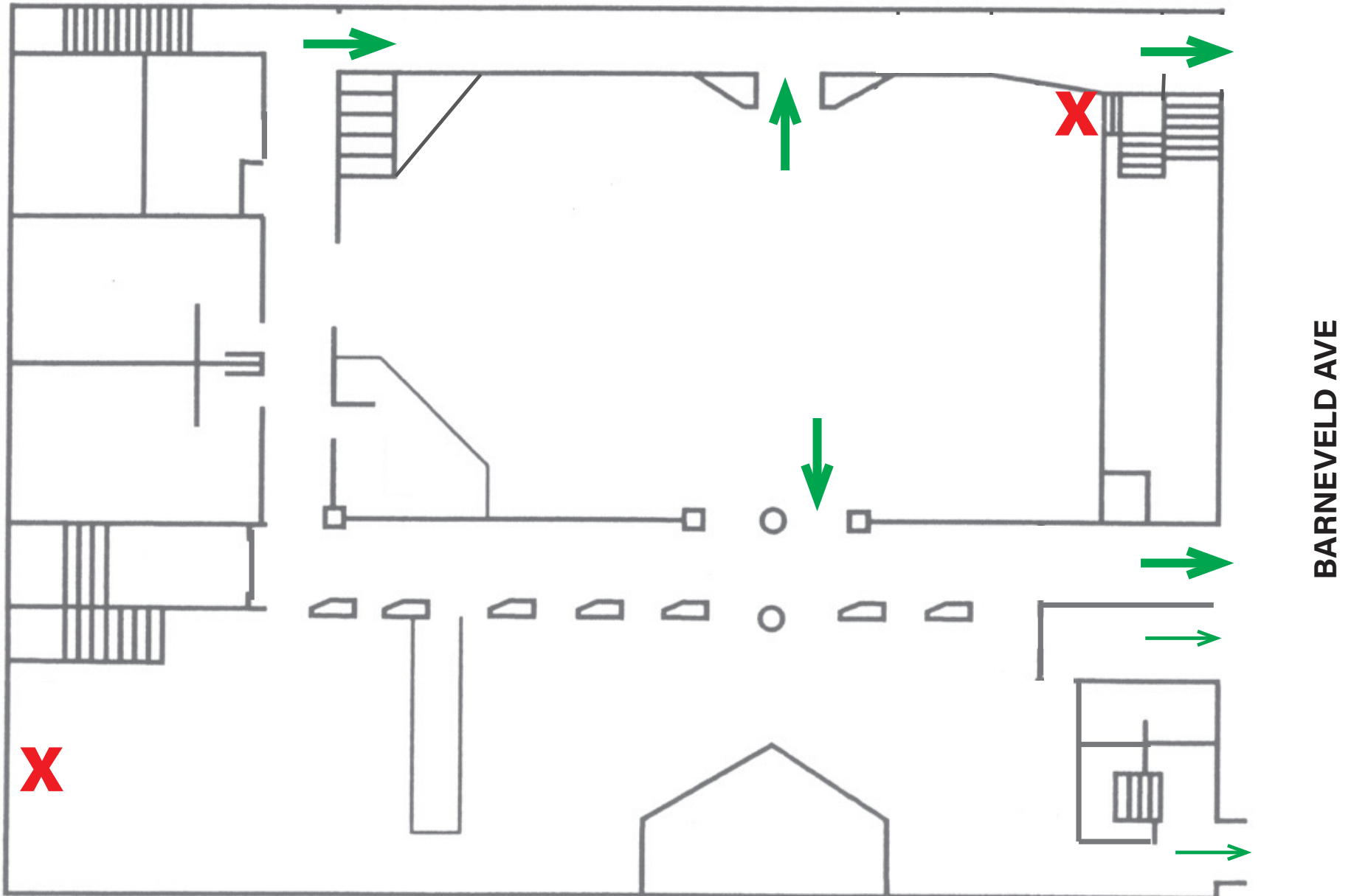
Exit routes at Sundance Saloon

All exits face Barneveld Avenue. There are no exits at the back of the club.

The small door near the stage is not an official exit, as it locks when closed and cannot be relied on.

The two exits closest to the bar are narrower than the main exits and may be partially obstructed.

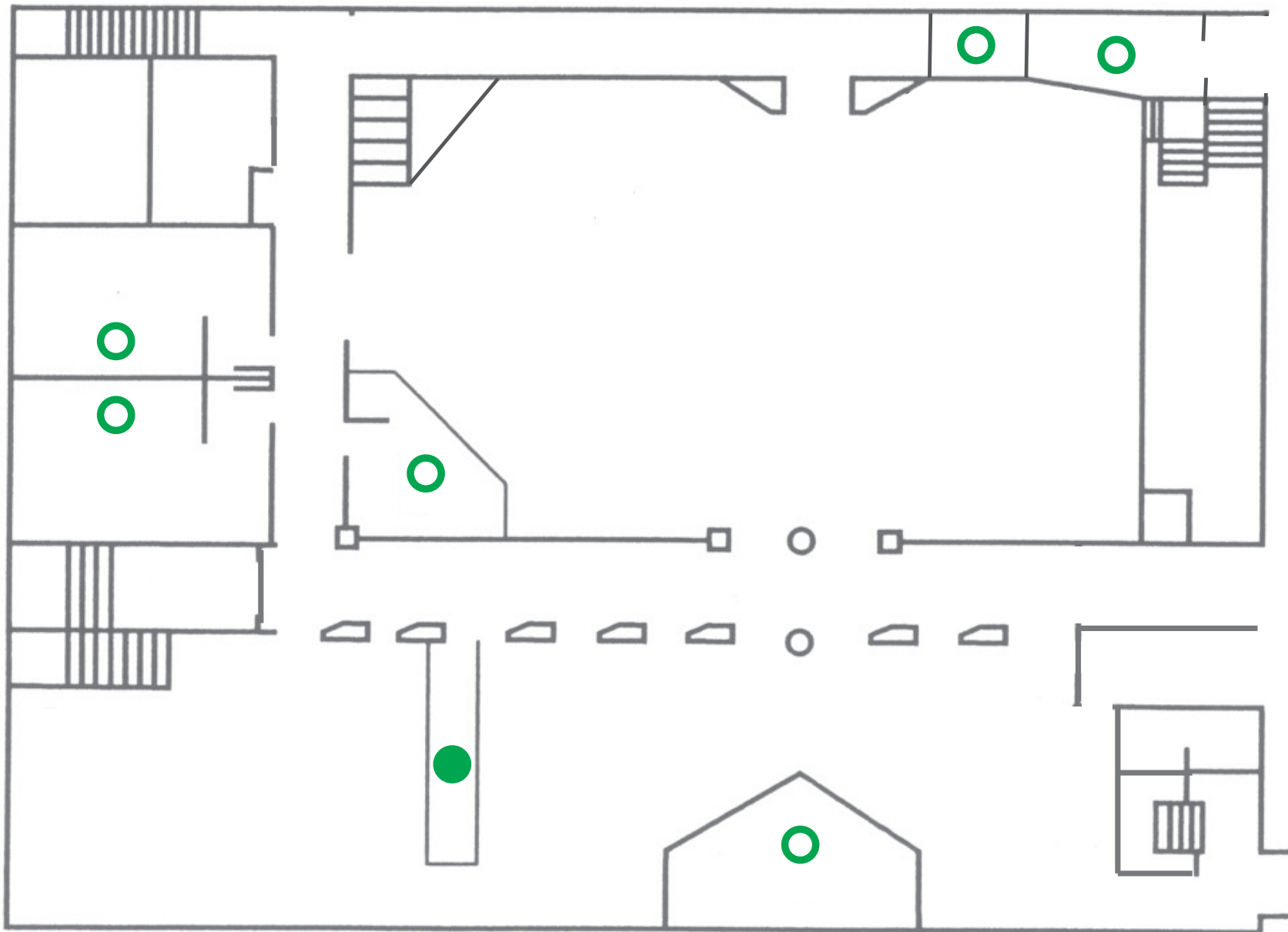
The metal barricades in the patio are not locked and can be merely pushed aside in an emergency.



Hiding places at Sundance Saloon - few in number and not very secure.

The only accessible and lockable room is the club's official coat-check - door between the bar and the back room. This room provides concealment but does not provide cover from penetration by bullets.

All other hiding places are partially exposed or in unlockable rooms. You could use these as temporary hiding places, but you should remain prepared to run or fight.



BARNEVELD AVE